

Population

1. Size and growth

Size and growth

There are 55.847 persons living in Greenland (by January 1st 2016). This has been the size of the population +/- 1000 persons during the past 20 years. From 2005 the population started a slow declining tendency, which is expected to continue in the coming years.

Summary table 1.1. Population by place of birth

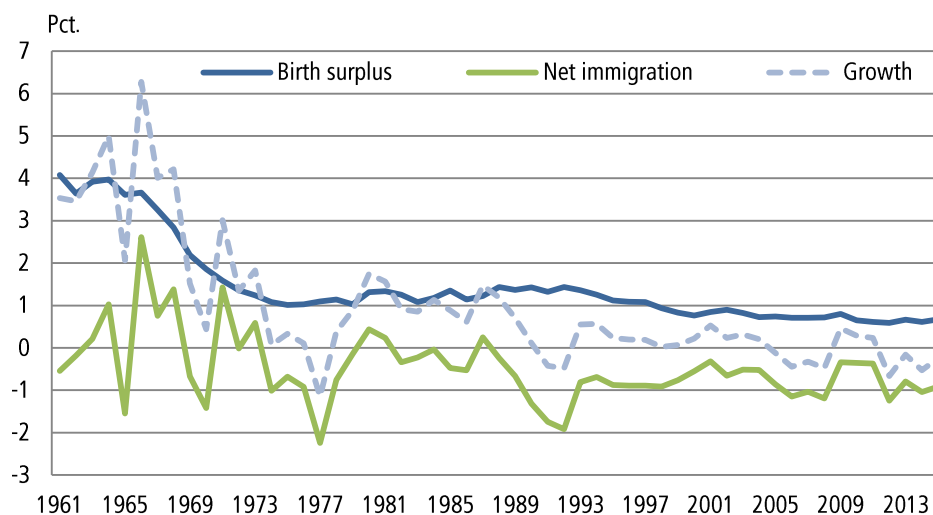
	1985	1990	1995	2000	2005	2010	2015	2016
Total	52.940	55.558	55.732	56.124	56.969	56.452	55.984	55.847
Greenland	43.751	46.306	48.412	49.369	50.272	50.226	49.975	49.826
Outside Greenland	9.189	9.252	7.320	6.755	6.697	6.226	6.009	6.021

Source: Statistics Greenland, <http://bank.stat.gl/beest1>

The size of the population and growth over time is explained by changes in the number of live birth, deaths, immigrants and emigrant. In figure 1.1 you can see the interaction between growth, birth surplus and net migration. Typically the birth surplus and net emigration contributes to a positive growth.

In figure 1.1 population growth, birth surplus and net emigrations is shown. Throughout the whole period there has been a stable birth surplus and volatile migrations.

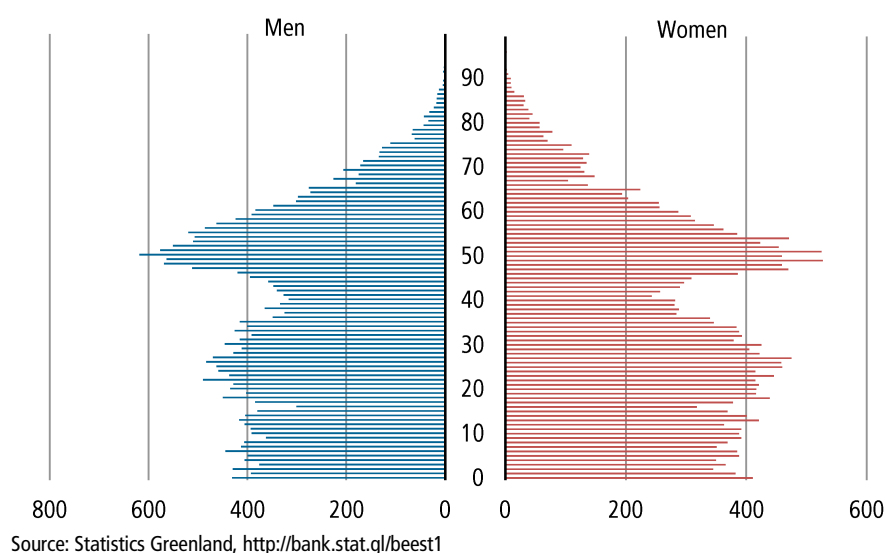
Figure 1.1. Population growth, birth surplus and net emigrations. Total population



Source: Statistics Greenland, <http://bank.stat.gl/beesat1>

The birth surplus was extremely high in the early 1960s due to a very high fertility level. Within a few years the fertility level was halved, and the birth cohorts was equally halved. We talk of ‘the big cohorts’ from the 1960s. These cohorts were twice as big as cohorts 10 years prior and after. The age-distribution over the past 50 years has been heavily influenced by these cohorts, and is still very visual in a population pyramid. In 2016 the cohorts are between 46 and 56 years old – and in ten years they will be about to retire.

Figure 1.2. Population pyramid 2016. Total population



2. Structure

Gender, age and marital status

Summary table 2.1. Population by gender 1985-2016

	1985	1990	1995	2000	2005	2010	2015	2016
Total	52.940	55.558	55.732	56.124	56.969	56.452	55.984	55.847
Male	28.772	30.057	29.706	29.989	30.319	29.936	29.556	29.543
Female	24.168	25.501	26.026	26.135	26.650	26.516	26.428	26.304
	Procent							
Male	54,3	54,1	53,3	53,4	53,2	53,0	52,8	52,9
Female	45,7	45,9	46,7	46,6	46,8	47,0	47,2	47,1

Source: Statistics Greenland <http://bank.stat.gl/beest1>

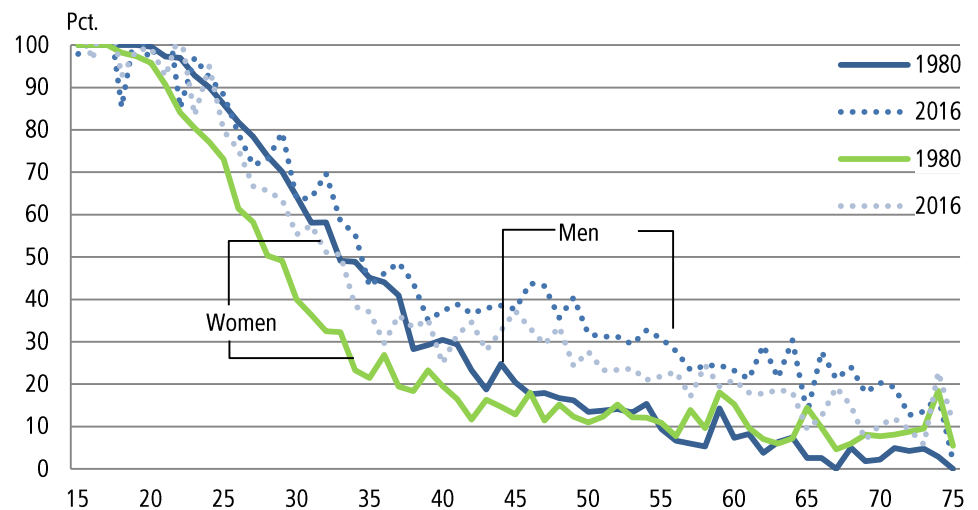
There are more males than females living in Greenland as 53 percent of total population are males. Generally there is a surplus of men in the working ages. Only in the oldest age groups women outnumber men. This is primary due to a group of men, born outside Greenland. This group, attracted by work, consist of double as many men as women.

The Greenlandic population is young. 7,7 percent of the population is over 65 years and less than 1 percent has turned 80 years.

The dependency ratio shows the ratio between people out of the working ages and the number of people in the active ages.

When setting the working ages to 20-64 years, the 'dependency ratio' by January 1st 2016 is calculated to 0.56. This mean, that for every 100 persons in the working ages, 56 persons, needs support. A view back in time shows, that the 'dependency ratio' in 1979 was 0.89, that is a much higher ratio than today. Ever since the mid 1990s the ratio has been around 65 per 100 in work. This, by the way, is pretty close to the world average when the working ages are counted as 15- 64 years. (see World Population Data Sheet Population Reference Bureau - www.prb.org)

Figure 2.1. Ratio of never married, born i n Greenland by age and gender 1980 and 2016



Source: Statistics Greenland, <http://bank.stat.gl/beest5>

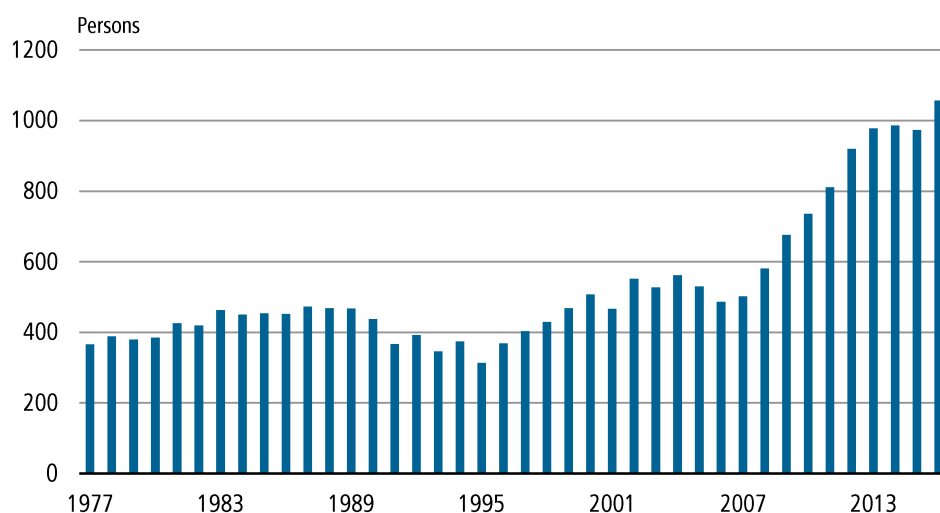
shows that over the past 30 years it has become more common to stay unmarried. This is even more outspoken for men than women.

3. Place of birth and citizenship

Place of birth and citizenship

Until a few years ago less than 1 percent of the population had foreign citizenship. As can be seen in figure 3.1 this is changing and only in the last 5 years the number of foreign citizens has risen 1 to 2 percent of the population.

Figure 3.1. Foreign citizens. 1977-2016



Source: Statistics Greenland, <http://bank.stat.gl/beest6>

We often split the population by birthplace with the categories 'born in Greenland' and 'born outside Greenland' as average considerations otherwise will hide important demographic differences between the groups. At the same time the proportion of people born outside Greenland has decreased from 18 percent in 1980 to 10,8 percent in 2016.

In summary table 3.1 the population has been tabulated by persons own 'place of birth' as well as parents 'place of birth'. From the table it is seen that 49,826 or 89,2 percent of the population was born in Greenland.

Summary table 3.1. Population by own and parents place of birth. 2016

Place of birth	Total	Both parents birthplace			One parent born in Greenland/ Second parent	
		Greenland	Outside		Greenland	unknown
			Greenland	unknown		
Total	55.847	35.210	710	10.448	9.185	294
Greenland	49.826	34.703	302	6.184	8.531	106
Outside Greenland	6.021	507	408	4.264	654	188

Source: Statistics Greenland, <http://bank.stat.gl/beeaao3>

In summary table 3.1 the population additionally has been calculated by the parents birthplace. It is seen, that 44.689 (35.210 + 9.185 + 294) equal to 80 percent of the population has at least one parent born in Greenland. Our archives do not hold information on the parents birthplace for 1/4 of the population. This is either because the parents can't be found in CPR (Danish

register on persons), or because they live outside Denmark or Greenland or because they died prior to 1967, when the system was introduced.

Summary table 3.2. Population with strong family ties to Greenland. 2016

Place of birth	Total	Both parents birthplace		One parent born in Greenland
		Greenland	Unknown	Second parent born outside Greenland
Total	50.873	35.210	6.184	9.479
Greenland	49.524	34.703	6.184	8.637
Outside Greenland	1.349	507	0	842

Source: Statistics Greenland

If at least one parent was born in Greenland, the person is said to have strong family ties to Greenland. This includes the persons, where both parents' birthplaces are unknown, if the person in question was born in Greenland. With this definition 50,873 persons has strong family ties to Greenland by 2016. This represents 91 percent of the total population. There is almost no difference in the proportion of people who have strong family ties (91 percent) compared to the proportion of persons born in Greenland (89 percent).

4. Towns and Settlements

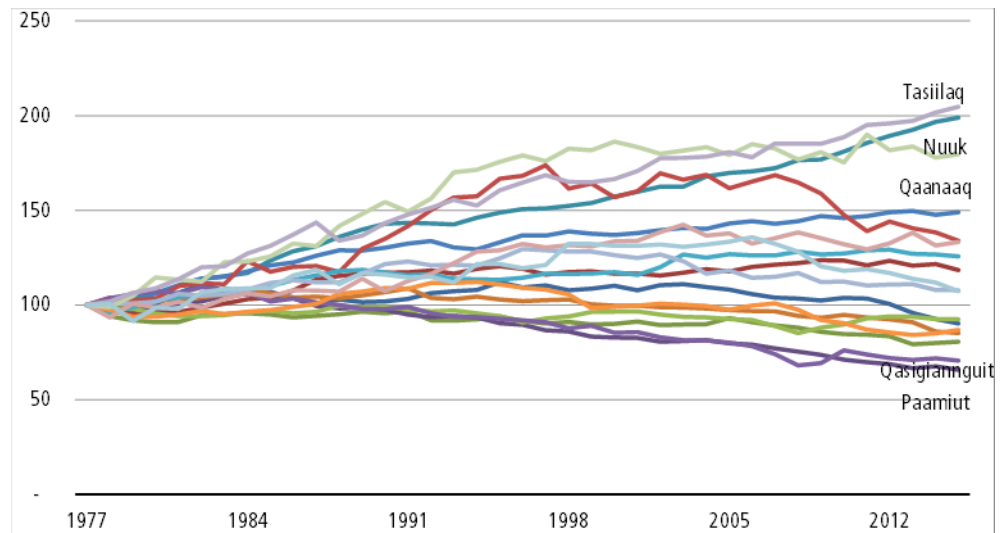
Towns and Settlements

According to Asiaqs' register of localities there are 89 active localities in Greenland by October 16th 2015. A locality can be a town(17), a settlement (54), farm(5), station(5).

Until the municipal amalgamation January 1st 2009, there was only one city in each municipality, in which municipal administration was found. Following the merger of municipalities we call the old municipalities for districts. A municipality consists of several towns and settlements.

Through the 1960s the population grew rapidly in the towns. The towns absorbed both population growth and the exodus from the settlements. This trend continued over the last 30 years as the population in towns continues to rise while it declines in the settlements. Figure 4.1 shows total population in the towns 1979-2014. The towns in Nuuk and Qaanaaq have almost doubled their population during the period, while the population in Paamiut and Qasigiannuit has been reduced by 25 percent.

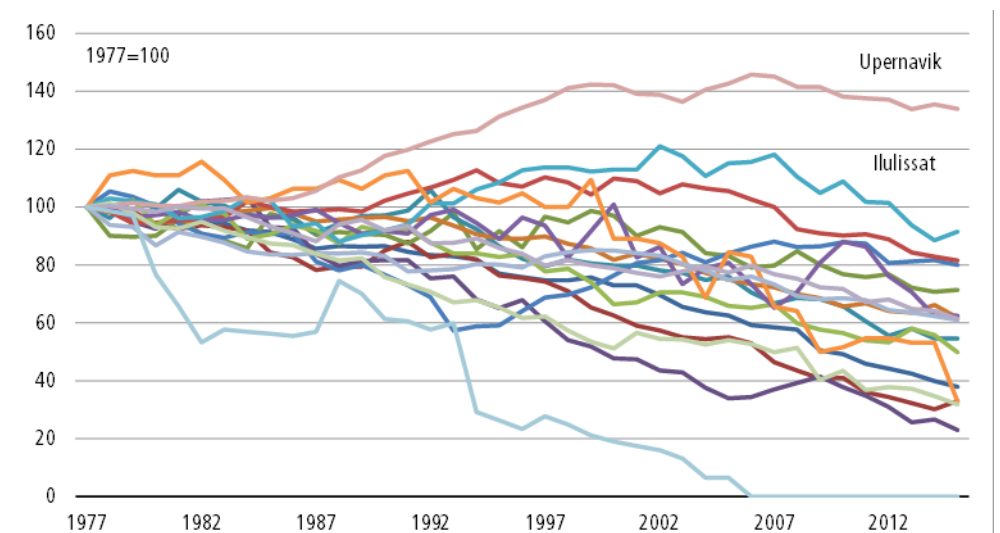
Figure 4.1. Population trends in towns 1977-2016



Source: Statistics Greenland, <http://bank.stat.gl/beest3>

Only the settlements in Upernavik and Ilulissat has experienced an increasing population. A number of settlements have been abandoned – partly or totally.

Figure 4.2. Population trends in settlements 1977-2016



Source: Statistics Greenland, <http://bank.stat.gl/beest3>

5. Vital statistics

Fertility

855 live born children were born in Greenland in 2015. Of these 794 were born by mothers born in Greenland themselves, and 71 were born by mothers from abroad.

The annual number of live born can be decomposed into the size of the female population, their age-distribution and their age-specific fertility rates. Fertility often compares by a number of indicators, some shown in summary table 5.1.

Summary table 5.1. Fertility indicators 2015

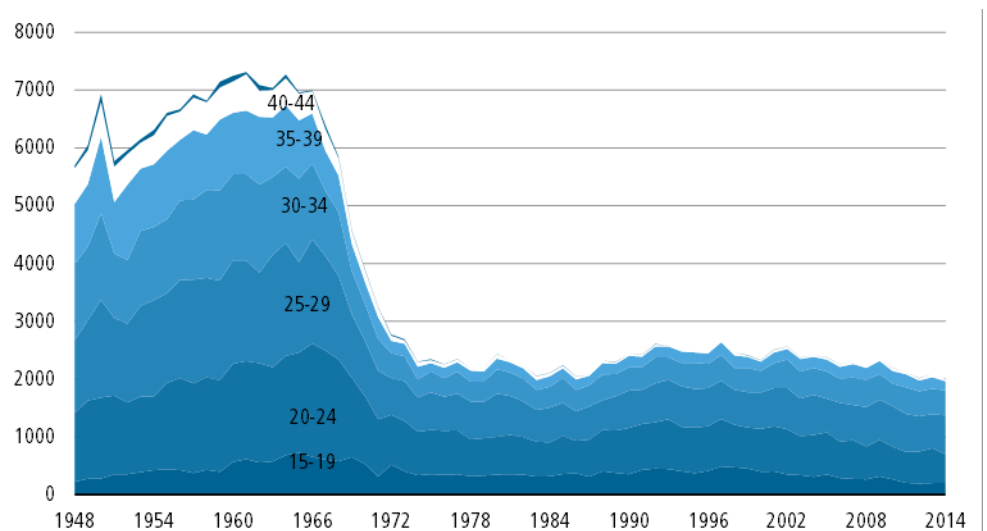
	Total			Mothers born in Greenland			Born outside Greenland		
	1995	2005	2015	1995	2005	2015	1995	2005	2015
Liveborn	1,101	886	855	1,012	794	784	89	92	71
Fertilityrate	19,7	15,6	15,3	20,8	15,8	15,7	12,3	13,9	11,8
General fertility	77,7	61,0	63,7	80,2	60,2	64,4	57,8	68,6	57,3
Total fertility	2,519	2,381	2,116	2,585	2,353	2,132	1,876	2,244	1,848
Gross reproduction	1,227	1,159	1,030	1,259	1,146	1,038	0,913	1,093	0,900
Net reproduction	1,173	1,097	1,006

Source: Statistics Greenland, <http://bank.stat.gl/beebbsf2>

The fertility-indicators give an overview of fertility and the age-specific fertility rates a more detailed picture. In figure 5.1 development in the age-specific rates are shown for women, born in Greenland.

The fertility level dropped very sharply in the late 1960s and early 1970s. From 1975 till today, the total fertility rate (the number of children a woman would get if she gives birth in accordance with the annual fertility rates) fluctuated between approximately 2.0 and 2.6 children.

Figure 5.1. Total fertility 1948-2015, per 1000 women born in Greenland



Source: Statistics Greenland, <http://bank.stat.gl/beebbsf1>

Over the last 10 years a decline in fertility for women under 25 years can be seen. The total fertility rate is now so low that the population can not reproduce itself.

6. Mortality

Mortality

In summary table 6.1. the main mortality indicators for 2013 – 2015 can be found. 479 persons died in 2014.

Life expectancy at 0-year equals how old a newborn child can expect to be with the death rates that exist in the different age groups in a given period. Life expectancy for persons born in Greenland has risen by 10.1 years for males and 6.2 years for women in the period from 1977-1981 to 2011-2015.

Summary table 6.1. Mortality indicators

	Total			Males			Females		
	2013	2014	2015	2013	2014	2015	2013	2014	2015
Deaths	450	464	479	270	240	291	180	224	188
Non natural deaths ¹
Mortality rate	8,0	8,3	8,6	9,1	8,1	9,9	6,8	8,5	7,1
Life expectancy ²	68,6	69,1	69,7	73,7	73,7	74,1
Life expectancy ² (Born in Grl.)	67,3	67,9	68,5	73,3	73,2	73,7

Source: Statistics Greenland, The National Board of Health

1) See <http://bank.stat.gl/SUELDM1>

2) Calculated for 5-year periods. 2015=2011-2015

Summary table 6.2. Life expectancy newborn. Persons born in Greenland

	1977-1981	1982-1986	1987-1991	1992-1996	1997-2001	2002-2006	2011-2015
Males	58,4	58,3	58,9	62,0	62,6	64,9	68,5
Females	67,5	65,9	68,0	68,2	68,4	71,1	73,7

Source: Statistics Greenland, <http://bank.stat.gl/beedt>

Both men and women born in Greenland have shorter life span than those from countries in the Western world. There are two main reasons: Greenland still has a relatively high infant mortality and second high mortality due to accidents and suicides. Deaths due to accident or suicide typically occurs among young men aged 15-35 years. Like deaths among infants these contributes to a significant number of life years lost, far more than the rising number of deaths from cancer and heart disease, which typically occurs later in life.

In Summary table 6.3 the difference between men and women's age-specific mortality rates are shown.

Summary table 6.3. Death pr 1000. Persons born in Greenland

	Males						Females					
	2011	2012	2013	2014	2015	2011-2015	2011	2012	2013	2014	2015	2011-2015
0	14,0	10,1	12,4	7,4	20,7	12,9	7,7	8,0	5,4	11,0	8,0	8,0
1-4	0,0	0,6	1,2	0,6	0,7	0,6	0,0	0,0	0,7	0,0	0,7	0,3
5-9	0,0	0,0	0,0	0,0	0,5	0,1	0,0	0,5	0,0	0,6	0,0	0,2
10-14	0,5	0,5	0,0	0,0	0,5	0,3	0,5	0,0	1,0	1,1	0,0	0,5
15-19	6,4	2,3	3,9	3,1	3,7	3,9	2,3	1,0	3,5	1,0	1,6	1,9
20-24	3,2	4,1	4,5	3,6	4,6	4,0	1,4	0,9	0,9	3,7	3,4	2,1
25-29	2,7	3,8	3,2	4,1	2,0	3,2	1,1	0,0	0,0	1,0	0,5	0,5
30-34	2,0	3,2	2,5	1,8	2,3	2,3	2,8	2,0	1,3	1,2	0,6	1,5
35-39	4,6	3,1	2,3	3,1	3,7	3,3	3,3	1,7	2,5	2,4	0,8	2,1
40-44	3,4	6,2	4,5	5,7	2,3	4,4	2,0	2,3	2,0	1,5	2,5	2,1
45-49	7,7	4,0	6,0	5,1	5,6	5,7	6,4	2,1	2,6	4,5	1,9	3,5
50-54	8,7	6,2	7,9	5,0	6,6	6,8	2,3	5,3	4,5	3,8	5,1	4,3
55-59	10,3	8,5	19,7	14,0	11,0	12,8	11,3	10,7	5,8	8,2	10,4	9,2
60-64	20,8	23,6	23,4	22,0	23,1	22,6	26,0	17,4	11,8	19,5	9,4	16,5
65-69	30,3	48,0	30,5	24,0	47,2	36,0	36,3	21,7	35,9	35,0	31,1	31,9
70-74	60,9	80,1	52,1	52,3	63,2	61,5	60,7	56,4	40,4	49,8	36,1	48,2
75-79	114,1	128,7	131,9	101,5	119,8	119,3	81,2	72,1	81,6	84,9	73,2	78,6
80-84	187,2	166,0	151,4	127,3	125,9	150,3	140,2	133,3	96,3	163,0	155,3	137,3
85-89	200,0	200,0	158,7	126,6	236,6	185,1	127,0	219,0	242,9	274,5	158,2	204,6

Source: Statistics Greenland, <http://bank.stat.gl/beebdm1>

7. Internal migrations

Internal migrations

In Greenland internal migration has a significant impact on the regional population size, sex and age distribution. The impact is much greater than the effect of births and deaths and it affects the composition of the population both the locality of migration and the one of removal.

22,830 domestic movements were recorded in 2015. Most movements were within the same locality.

Summary table 7.1. Internal migrations

	2005	2006	2007	2008	2009	2010	2011	2012	2013	2014	2015
Total	20.413	20.781	21.766	20.639	21.066	22.313	21.941	21.698	22.701	23.110	22.831
same town	12.250	12.490	13.130	12.040	12.644	13.755	13.200	13.129	14.000	14.322	13.791
same settlement	1.294	1.271	1.299	1.252	1.112	1.215	1.316	1.191	1.219	1.119	1.232
between towns	4.361	4.428	4.561	4.439	4.548	4.553	4.507	4.440	4.672	4.695	4.875
between settlem.	279	302	312	406	337	346	370	418	332	345	363
from settl. to town	1.115	1.240	1.367	1.323	1.266	1.325	1.392	1.359	1.272	1.403	1.306
from town to settl.	1.047	999	1.041	1.057	1.096	1.070	1.124	1.079	1.150	1.201	1.242
Others	67	51	56	122	63	49	32	82	56	25	22

Source: Statistics Greenland, <http://bank.stat.gl/beebaf2b>

8. Migrations

Migrations

Since the 1970s, net migration has varied greatly from year to year. With few exceptions, emigration generally exceeds immigration. In the early 1990s a significant decline in immigration led to a large net outflow, so great, that the birth rate could not prevent a decline in the total population. From 2005 to 2008 net emigration was markedly higher than in previous years, especially among 'persons born in Greenland'.

Summary table 8.1. Netimmigration by place of birth. 2001-2014

	2005	2006	2007	2008	2009	2010	2011	2012	2013	2014	2015
	Total										
Net immigrations	-441	-645	-573	-638	-192	-159	-153	-712	-448	-583	-511
Immigrations	2.511	2.395	2.404	2.526	2.540	2.448	2.281	2.188	2.063	2.146	2.177
Emigrations	2.952	3.040	2.977	3.164	2.732	2.607	2.434	2.900	2.511	2.729	2.688
	Born Greenland										
Net immigrations	-382	-466	-508	-645	-275	-276	-303	-615	-336	-449	-525
Immigrations	870	892	887	915	1.079	1.061	917	871	975	1.055	1.019
Emigrations	1.252	1.358	1.395	1.560	1.354	1.337	1.220	1.486	1.311	1.504	1.544
	Born outside Greenland										
Net immigrations	-59	-179	-65	7	83	117	150	-97	-112	-134	14
Immigrations	1.641	1.503	1.517	1.611	1.461	1.387	1.364	1.317	1.088	1.091	1.158
Emigrations	1.700	1.682	1.582	1.604	1.378	1.270	1.214	1.414	1.200	1.225	1.144

Source: Statistics Greenland, <http://bank.stat.gl/beebbiu2>

More than nine of 10 migrations are between Denmark and Greenland. The remaining migrations are primarily to or from the other Scandinavian countries.

9. Population forecast

Population forecast

Population projections provide estimates of the future size, gender and age composition of the population. It is important to stress that population projections are not accurate predictions about the future, but are the result of calculations determined by assumptions about births, deaths and migration. If our assumptions are not met, the actual developments will deviate from the projection.

Our assumption on fertility and mortality are based on experiences from the period 2011 – 2015, while assumptions on migration are based on the latest 10-year period.

Summary table 9.1. Population 2017-2025

	2017	2018	2019	2020	2021	2022	2023	2024	2025
Total	55.750	55.647	55.556	55.454	55.351	55.245	55.133	55.033	54.909
Persons born in Greenland	49.734	49.640	49.554	49.460	49.374	49.278	49.193	49.080	48.979
Persons born outside Greenland	6.016	6.007	6.002	5.994	5.977	5.967	5.940	5.953	5.930

Source: Statistics Greenland, <http://bank.stat.gl/BEEPROG>

I summary table 9.1 and [table 5](#) results from the projections can be seen. For more details – visit <http://bank.stat.gl/BEEPROG> . The forecast is calculated on both ‘persons born in Greenland’ and those ‘born outside Greenland’. The two subpopulations evolve in different directions. The persons born in Greenland, are expected to decrease steadily from 49,826 persons in 2016 to 48,979 persons in 2025. The ‘persons born outside Greenland’ are expected to increase from 6,021 persons in 2016 to 5,930 in 2025. The total population will decrease over the next decade

Population and Population growth

Table 1. Population and Population growth

	Place of birth			Growth by place of birth					
	Total	Greenland	Outside Greenland	Total	Greenland	Outside Greenland			
	Count			Growth			Growth in percent		
1901	11.893	11.621	272
1911	13.459	13.075	384	157	145	112	1,2	1,2	3,5
1921	14.355	14.081	274	90	101	-110	0,6	0,7	-3,3
1930	16.901	16.488	413	283	267	139	1,8	1,8	4,7
1946	21.412	20.939	473	296	292	60	1,6	1,6	0,9
1951	23.642	22.581	1.061	446	328	588	2,0	1,5	17,5
1956	27.101	25.234	1.867	692	531	806	2,8	2,4	12,0
1961	33.140	30.378	2.762	1.208	1.029	895	4,2	4,1	8,2
1962	34.312	31.304	3.008	1.172	926	246	3,5	3,0	8,0
1963	35.499	32.288	3.211	1.187	984	203	3,5	3,1	6,7
1964	36.967	33.406	3.561	1.468	1.118	350	4,1	3,5	10,9
1965	38.815	34.711	4.104	1.848	1.305	543	5,0	3,9	15,2
1966	39.615	35.132	4.483	800	421	379	2,1	1,2	9,2
1967	42.102	36.380	5.722	2.487	1.248	1.239	6,3	3,6	27,6
1968	43.792	37.372	6.420	1.690	992	698	4,0	2,7	12,2
1969	45.639	38.378	7.261	1.847	1.006	841	4,2	2,7	13,1
1970	46.331	38.914	7.417	692	536	156	1,5	1,3	2,1
1971	46.532	38.912	7.620	201	2	203	0,4	0,0	2,7
1972	47.935	39.752	8.183	1.403	840	563	3,0	2,2	2,2
1973	48.581	40.089	8.492	646	337	309	1,3	0,8	3,8
1974	49.468	40.091	9.377	887	2	885	1,8	0,0	10,4
1975	49.502	39.979	9.523	34	-112	146	0,1	-0,3	1,6
1976	49.666	40.390	9.276	164	411	-247	0,3	1,0	-2,6
1977	49.719	40.601	9.118	53	211	-158	0,1	0,5	-1,7
1978	49.148	40.609	8.539	-571	8	-579	-1,1	0,0	-6,4
1979	49.338	40.775	8.563	190	166	24	0,4	0,4	0,3
1980	49.773	40.947	8.826	435	172	263	0,9	0,4	3,1
1981	50.643	41.459	9.184	870	512	358	1,7	1,3	4,1
1982	51.435	42.156	9.279	792	697	95	1,6	1,7	1,0
1983	51.903	42.669	9.234	468	513	-45	0,9	1,2	-0,5
1984	52.347	43.130	9.217	444	461	-17	0,9	1,1	-0,2
1985	52.940	43.587	9.353	593	457	136	1,1	1,1	1,5
1986	53.406	44.053	9.353	466	466	0	0,9	1,1	0,0
1987	53.733	44.430	9.303	327	377	-50	0,6	0,9	-0,5
1988	54.524	44.952	9.572	791	522	269	1,5	1,2	2,9
1989	55.171	45.629	9.542	647	677	-30	1,2	1,5	-0,3
1990	55.558	46.142	9.416	387	513	-126	0,7	1,1	-1,3
1991	55.620	46.778	8.842	62	636	-574	0,1	1,4	-6,1
1992	55.385	47.184	8.201	-235	406	-641	-0,4	0,9	-7,2
1993	55.117	47.558	7.559	-268	374	-642	-0,5	0,8	-7,8
1994	55.419	48.029	7.390	302	471	-169	0,5	1,0	-2,2
1995	55.732	48.412	7.320	313	383	-70	0,6	0,8	-0,9
1996	55.863	48.679	7.184	131	267	-136	0,2	0,6	-1,9
1997	55.971	48.882	7.089	108	203	-95	0,2	0,4	-1,3
1998	56.076	49.117	6.959	105	235	-130	0,2	0,5	-1,8
1999	56.087	49.281	6.806	11	164	-153	0,0	0,3	-2,2
2000	56.124	49.369	6.755	37	88	-51	0,1	0,2	-0,7
2001	56.245	49.623	6.622	121	254	-133	0,2	0,5	-2,0
2002	56.542	49.796	6.746	297	173	124	0,5	0,3	1,9
2003	56.676	49.941	6.735	134	145	-11	0,2	0,3	-0,2
2004	56.854	50.096	6.758	178	155	23	0,3	0,3	0,3
2005	56.969	50.283	6.686	115	187	-72	0,2	0,4	-1,1
2006	56.901	50.397	6.504	-68	114	-182	-0,1	0,2	-2,7
2007	56.648	50.366	6.282	-253	-31	-222	-0,4	-0,1	-3,4

2008	56.462	50.270	6.192	-186	-96	-90	-0,3	-0,2	-1,4
2009	56.194	50.023	6.171	-268	-247	-21	-0,5	-0,5	-0,3
2010	56.452	50.226	6.226	258	203	55	0,5	0,4	0,9
2011	56.615	50.321	6.294	163	95	68	0,3	0,2	1,1
2012	56.749	50.340	6.409	134	19	115	0,2	0,4	1,8
2013	56.370	50.101	6.269	-379	-239	-140	-0,7	-0,5	-2,2
2014	56.282	50.157	6.125	-88	56	-144	-0,2	0,1	-2,4
2015	55.984	49.975	6.009	-298	-182	-116	-0,5	-0,4	-1,9
2016	55.847	49.826	6.021	-137	-149	12	-0,2	-0,3	0,2

<http://bank.stat.gl/beesat1>

Notes:

1) 1901-30: "Natives". 1945-51: "Persons under greenlandic jurisdiction".

2) Northgreenland, in 1930 271 persons, all of whom born in Greenland.

3) The large fluctuations in growth was due to technical issues at registration

4) Includes from 1966 and onward the civil part of Kangerlussuaq (Sdr. Strømfjord). 579 persons were added, all except 5 born outside Greenland.

Source: Statsministeriets Grønlandsafdeling, Statistics Denmark and Statistics Greenland

Source: Statsministeriets Grønlandsafdeling, Danmarks Statistik og Grønlands Statistik

Vital statistics

Table 2. Vital statistics

	Liveborn		Death		Birth-surplus	Net immigration (incl. corrections)			Growth Total
	Mother born in Greenland	Total	Born in Greenland	Total		Born in Greenland	Born outside Greenland	Total	
1950	1.110	1.129	537	539	590	-113	122	9	599
1951	973	999	548	550	449	-142	210	68	517
1952	996	1.034	473	475	559	-96	141	45	604
1953	1.058	1.109	392	398	711	-213	41	-172	539
1954	1.103	1.136	384	388	748	-113	255	142	890
1955	1.179	1.234	371	375	859	-127	177	50	909
1956	1.235	1.293	347	351	942	-3	258	255	1.197
1957	1.303	1.361	329	337	1.024	37	165	202	1.226
1958	1.335	1.410	284	290	1.120	-201	178	-23	1.097
1959	1.412	1.491	278	285	1.206	-181	209	28	1.234
1960	1.496	1.586	247	256	1.330	-164	119	-45	1.285
1961	1.548	1.644	284	292	1.352	-338	158	-180	1.172
1962	1.489	1.610	344	361	1.249	-161	99	-62	1.187
1963	1.560	1.671	270	279	1.392	-172	248	76	1.468
1964	1.674	1.797	321	329	1.468	-48	428	380	1.848
1965	1.596	1.738	327	337	1.401	-848	247	-601	800
1966	1.608	1.781	318	329	1.452	-42	1.077	1.035	2.487
1967	1.507	1.685	305	314	1.371	-210	529	319	1.690
1968	1.418	1.576	319	333	1.243	-93	697	604	1.847
1969	1.151	1.310	293	311	999	-322	15	-307	692
1970	999	1.144	268	283	861	-733	73	-660	201
1971	851	1.028	268	289	739	257	407	664	1.403
1972	770	948	281	295	653	-152	145	-7	646
1973	706	940	320	339	601	-384	670	286	887
1974	638	866	312	332	534	-438	-62	-500	34
1975	671	815	299	313	502	39	-430	-391	164
1976	715	859	327	348	511	-177	-281	-458	53
1977	783	918	307	373	545	-468	-667	-1.135	-571
1978	717	870	295	309	561	-256	-110	-366	190
1979	794	900	375	393	507	-247	185	-62	435
1980	913	1.034	362	380	654	-39	264	225	870
1981	931	1.056	357	381	675	123	1	124	792
1982	952	1.052	386	408	644	-53	-120	-173	468
1983	890	994	407	433	561	-22	-85	-107	444
1984	916	1.054	407	439	615	-52	30	-22	593
1985	1.032	1.152	415	435	717	-151	-87	-238	466
1986	952	1.055	420	445	610	-155	-142	-297	327
1987	999	1.104	418	445	659	-59	205	146	791
1988	1.104	1.213	413	432	781	-14	-118	-132	647
1989	1.107	1.210	429	455	755	-165	-203	-368	387
1990	1.144	1.258	434	467	791	-74	-655	-729	62
1991	1.102	1.192	409	458	734	.	.	-969	-235
1992	1.124	1.237	420	441	796	-330	-734	-1.064	-268
1993	1.098	1.180	416	432	748	-333	-194	-527	302
1994	1.025	1.139	415	445	694	-308	-46	-354	313
1995	1.012	1.101	453	480	621	-366	-100	-466	131
1996	956	1.051	411	444	607	-419	-64	-483	108
1997	1.023	1.095	466	492	603	-373	-28	-401	105
1998	901	980	434	457	523	-419	-96	-515	-52
1999	880	945	443	479	466	-290	-26	-316	83
2000	807	879	429	450	429	-158	-47	-205	138
2001	856	942	434	466	476	-234	-13	-247	297
2002	877	954	417	446	508	-357	69	-288	134
2003	786	879	388	411	468	-315	-30	-345	178
2004	809	892	440	479	413	-191	-45	-236	115

2005	794	886	446	465	421	-382	-66	-448	-68
2006	772	842	409	440	402	-468	-176	-644	-253
2007	755	853	429	452	401	-507	-59	-566	-186
2008	763	834	401	428	406	-653	14	-639	-268
2009	816	895	417	444	451	-278	89	-189	258
2010	774	869	471	504	365	-291	131	-160	163
2011	747	821	440	470	351	-310	151	-159	134
2012	732	790	429	459	331	-612	-97	-709	-379
2013	761	820	418	444	376	-340	-107	-447	-88
2014	737	805	429	461	344	-490	-95	-585	-298
2015	784	855	443	479	376	-525	14	-511	-137

Source: Statistics Greenland (<http://bank.stat.gl/beesat2>)

Notes:

1) The large fluctuations in growth is caused by technical issues at registration.

Source: Statsministeriets Grønlandsafdeling, Statistics Denmark and Statistics Greenland

Population in municipalities, districts, towns and settlements 2016

Table 3. Population in municipalities, districts, towns and settlements 2016

	0-6	7-16	17-24	25-64	65+	l alt
Total	5.508	7.642	6.835	31.425	4.437	55.847
Towns	4.699	6.465	5.877	27.298	3.801	48.140
Settlements ++	809	1.177	958	4.127	636	7.707
Municipal.						
Kommune Kujalleq	652	898	825	3.643	793	6.811
Towns	578	776	728	3.107	656	5.845
Settlements ++	74	122	97	536	137	966
Kommuneqarfik Sermersooq	2.219	3.003	2.578	13.363	1.317	22.480
Towns	2.061	2.773	2.423	12.680	1.207	21.144
Settlements ++	158	230	155	683	110	1.336
Qeqqata Kommunia	907	1.343	1.225	5.128	820	9.423
Towns	772	1.163	1.072	4.356	743	8.106
Settlements ++	135	180	153	772	77	1.317
Qaasuitsup Kommunia	1.730	2.398	2.200	9.179	1.501	17.008
Towns	1.288	1.753	1.654	7.155	1.195	13.045
Settlements ++	442	645	546	2.024	306	3.963
Outside Municipalities	-	-	7	112	6	125
Towns	-	-	-	-	-	-
Settlements ++	-	-	7	112	6	125
Districts						
Nanortalik	157	243	213	950	236	1.799
Town	122	165	157	663	157	1.264
Settlements ++	35	78	56	287	79	535
Qaqortoq	323	413	441	1.768	320	3.265
Town	304	395	422	1.679	289	3.089
Settlements ++	19	18	19	89	31	176
Narsaq	172	242	171	925	237	1.747
Town	152	216	149	765	210	1.492
Settlements ++	20	26	22	160	27	255
Ivittuut	-	-	-	1	-	1
Town	-	-	-	-	-	-
Settlements ++	-	-	-	1	-	1
Paamiut	139	200	186	816	186	1.527
Town	131	190	176	759	173	1.429
Settlements ++	8	10	10	57	13	98
Nuuk	1.654	2.181	1.964	10.846	946	17.591
Town	1.631	2.157	1.930	10.685	913	17.316
Settlements ++	23	24	34	161	33	275
Maniitsoq	302	405	361	1.789	330	3.187
Town	241	334	278	1.445	269	2.567
Settlements ++	61	71	83	344	61	620
Sisimiut	605	938	864	3.339	490	6.236
Town	531	829	794	2.911	474	5.539
Settlements ++	74	109	70	428	16	697
Kangaatsiaq	111	207	152	624	80	1.174
Town	53	90	61	297	35	536
Settlements ++	58	117	91	327	45	638
Aasiaat	318	381	557	1.711	308	3.275
Town	300	365	546	1.635	288	3.134
Settlements ++	18	16	11	76	20	141
Qasigiannuit	129	155	129	642	138	1.193
Town	118	142	122	603	130	1.115

Settlements ++	11	13	7	39	8	78
Ilulissat	479	656	505	2.755	408	4.803
Town	438	613	468	2.548	375	4.442
Settlements ++	41	43	37	207	33	361
Qeqertarsuaq	77	114	85	463	127	866
Town	74	113	84	452	124	847
Settlements ++	3	1	1	11	3	19
Uummannaq	194	309	313	1.184	196	2.196
Town	106	175	175	681	105	1.242
Settlements ++	88	134	138	503	91	954
Upernavik	330	460	370	1.393	187	2.740
Town	122	161	131	593	92	1.099
Settlements ++	208	299	239	800	95	1.641
Qaanaaq	92	116	89	407	57	761
Town	77	94	67	346	46	630
Settlements ++	15	22	22	61	11	131
Tasiilaq	373	570	376	1.498	160	2.977
Town	246	374	265	1.037	96	2.018
Settlements ++	127	196	111	461	64	959
Ittoqqortoormiit	53	52	52	202	25	384
Town	53	52	52	199	25	381
Settlements ++	-	-	-	3	-	3

<http://bank.stat.gl/beest3>

Source: Statistics Greenland

Population by age, gender, place of birth and marital status 2016

Table 4. Population by age, gender, place of birth and marital status 2016

	Males						Females				
	Total	Total	Unmarried	Married	Divorced	Widowed	Total	Unmarried	Married	Divorced	Widowed
Population											
Total	55.847	29.543	19.577	7.460	1.939	567	26.304	15.996	7.186	1.773	1.349
0-4	3.890	2.036	2.036	-	-	-	1.854	1.854	-	-	-
5-9	3.913	2.028	2.028	-	-	-	1.885	1.885	-	-	-
10-14	3.979	2.014	2.014	-	-	-	1.965	1.965	-	-	-
15-19	3.839	1.919	1.919	-	-	-	1.920	1.917	3	-	-
20-24	4.364	2.250	2.215	33	2	-	2.114	2.009	97	6	2
25-29	4.478	2.258	2.040	199	19	-	2.220	1.816	361	37	6
30-34	4.050	2.081	1.565	458	56	2	1.969	1.224	627	111	7
35-39	3.328	1.789	1.068	590	128	3	1.539	651	713	164	11
40-44	3.060	1.691	810	670	205	6	1.369	478	684	185	22
45-49	4.611	2.460	1.049	1.073	319	19	2.151	657	1.106	328	60
50-54	5.096	2.764	1.059	1.288	375	42	2.332	601	1.291	361	79
55-59	4.001	2.285	753	1.165	334	33	1.716	413	949	225	129
60-64	2.801	1.605	484	824	235	62	1.196	269	626	151	150
65-69	1.808	1.064	298	533	134	99	744	120	351	94	179
70-74	1.357	733	161	385	78	109	624	60	253	63	248
75-79	729	351	55	174	37	85	378	47	91	36	204
80-84	360	150	20	51	12	67	210	23	28	9	150
85-89	153	55	1	15	5	34	98	7	6	3	82
90-94	27	9	1	2	-	6	18	-	-	-	18
95+	3	1	1	-	-	-	2	-	-	-	2
Born Greenland											
Total	49.826	25.564	17.588	5.936	1.551	489	24.262	14.870	6.450	1.630	1.312
0-4	3.661	1.906	1.906	-	-	-	1.755	1.755	-	-	-
5-9	3.686	1.905	1.905	-	-	-	1.781	1.781	-	-	-
10-14	3.773	1.920	1.920	-	-	-	1.853	1.853	-	-	-
15-19	3.709	1.855	1.855	-	-	-	1.854	1.852	2	-	-
20-24	4.182	2.145	2.114	29	2	-	2.037	1.936	93	6	2
25-29	4.006	2.021	1.834	170	17	-	1.985	1.633	312	35	5
30-34	3.453	1.758	1.339	366	52	1	1.695	1.057	525	106	7
35-39	2.724	1.410	853	441	113	3	1.314	551	600	154	9
40-44	2.439	1.267	601	493	169	4	1.172	402	585	165	20
45-49	4.019	2.037	871	868	282	16	1.982	612	1.007	306	57
50-54	4.469	2.286	907	1.031	309	39	2.183	566	1.203	336	78
55-59	3.454	1.876	648	948	254	26	1.578	385	866	202	125
60-64	2.347	1.275	397	656	177	45	1.072	242	564	128	138
65-69	1.535	831	247	408	89	87	704	111	332	86	175
70-74	1.190	588	130	311	52	95	602	58	241	61	242
75-79	665	293	42	154	25	72	372	47	87	34	204
80-84	340	132	16	46	8	62	208	23	27	8	150
85-89	146	50	1	14	2	33	96	6	6	3	81
90-94	25	8	1	1	-	6	17	-	-	-	17
95+	3	1	1	-	-	-	2	-	-	-	2
Born outside Greenland											
Total	6.021	3.979	1.989	1.524	388	78	2.042	1.126	736	143	37
0-4	229	130	130	-	-	-	99	99	-	-	-
5-9	227	123	123	-	-	-	104	104	-	-	-
10-14	206	94	94	-	-	-	112	112	-	-	-
15-19	130	64	64	-	-	-	66	65	1	-	-
20-24	182	105	101	4	-	-	77	73	4	-	-

25-29	472	237	206	29	2	-	235	183	49	2	1
30-34	597	323	226	92	4	1	274	167	102	5	-
35-39	604	379	215	149	15	-	225	100	113	10	2
40-44	621	424	209	177	36	2	197	76	99	20	2
45-49	592	423	178	205	37	3	169	45	99	22	3
50-54	627	478	152	257	66	3	149	35	88	25	1
55-59	547	409	105	217	80	7	138	28	83	23	4
60-64	454	330	87	168	58	17	124	27	62	23	12
65-69	273	233	51	125	45	12	40	9	19	8	4
70-74	167	145	31	74	26	14	22	2	12	2	6
75-79	64	58	13	20	12	13	6	-	4	2	-
80-84	20	18	4	5	4	5	2	-	1	1	-
85-89	7	5	-	1	3	1	2	1	-	-	1
90-94	2	1	-	1	-	-	1	-	-	-	1
95+	-	-	-	-	-	-	-	-	-	-	-

<http://bank.stat.gl/beest5>

Notes: 1) Separated has counted as married

Source: Statistics Greenland

Population 2016-2025

Table 5. Population 2016-2025

	2016	2017	2018	2019	2020	2021	2022	2023	2024	2025
Total										
Total	55.847	55.750	55.647	55.556	55.454	55.351	55.245	55.133	55.033	54.909
0-6	5.508	5.476	5.496	5.554	5.627	5.671	5.720	5.714	5.706	5.689
7-16	7.642	7.772	7.743	7.634	7.493	7.441	7.372	7.363	7.378	7.379
17-24	6.835	6.555	6.399	6.267	6.217	6.116	6.050	5.893	5.785	5.813
25-64	31.425	31.413	31.377	31.340	31.217	31.053	30.863	30.748	30.542	30.207
65+	4.437	4.534	4.632	4.761	4.900	5.070	5.240	5.415	5.622	5.821
Born in Greenland										
Total	49.826	49.734	49.640	49.554	49.460	49.374	49.278	49.193	49.080	48.979
0-6	5.190	5.097	5.061	5.063	5.093	5.092	5.141	5.135	5.128	5.110
7-16	7.253	7.373	7.341	7.239	7.082	7.025	6.903	6.846	6.804	6.766
17-24	6.568	6.288	6.110	5.953	5.888	5.769	5.688	5.513	5.388	5.403
25-64	26.911	26.976	27.020	27.044	26.988	26.878	26.739	26.667	26.478	26.146
65+	3.904	4.000	4.108	4.255	4.409	4.610	4.807	5.032	5.282	5.554
Born outside Greenland										
Total	6.021	6.016	6.007	6.002	5.994	5.977	5.967	5.940	5.953	5.930
0-6	318	379	435	491	534	579	579	579	578	579
7-16	389	399	402	395	411	416	469	517	574	613
17-24	267	267	289	314	329	347	362	380	397	410
25-64	4.514	4.437	4.357	4.296	4.229	4.175	4.124	4.081	4.064	4.061
65+	533	534	524	506	491	460	433	383	340	267

<http://bank.stat.gl/BEEP2012>

Source: Statistics Greenland

Life tables

Table 6. Life tables

	Male			Female			Male			Female		
	Survivors	Mortality	Life expectancy	Survivors	Mortality	Life expectancy	Survivors	Mortality	Life expectancy	Survivors	Mortality	Life expectancy
	1986-1990						1991-1995					
0	10.000	0,0278	60,7	10.000	0,0221	68,7	10.000	0,0202	62,8	10.000	0,0233	68,5
1	9722	0,0081	61,4	9779	0,0064	69,2	9798	0,0065	63,09	9767	0,0074	69,1
5	9446	0,0012	59,1	9558	0	66,8	9602	0,0015	60,33	9560	0,0004	66,6
10	9373	0,0005	54,6	9526	0	62,0	9555	0,0004	55,61	9534	0,0000	61,8
15	9336	0,0034	49,8	9521	0,0006	57,0	9518	0,0032	50,81	9519	0,0028	56,9
20	9147	0,0106	45,7	9463	0,001	52,3	9296	0,0059	46,93	9419	0,0018	52,4
25	8790	0,0059	42,4	9393	0,0029	47,7	9032	0,0058	43,2	9343	0,0027	47,8
30	8552	0,0057	38,5	9279	0,0033	43,2	8829	0,005	39,12	9282	0,0023	43,1
35	8359	0,0015	34,3	9158	0,0005	38,8	8633	0,0042	34,92	9232	0,0035	38,3
40	8197	0,0038	29,9	9059	0,0057	34,2	8443	0,0056	30,63	9109	0,0035	33,8
45	7995	0,0081	25,6	8853	0,0037	29,9	8220	0,0083	26,37	8961	0,0062	29,3
50	7695	0,0145	21,5	8615	0,0089	25,6	7978	0,01	22,06	8719	0,0056	25,0
55	7213	0,0196	17,7	8162	0,0119	21,8	7507	0,009	18,21	8441	0,0098	20,7
60	6448	0,0285	14,3	7584	0,0118	18,2	6989	0,0322	14,29	7865	0,0159	17,0
65	5382	0,0428	11,4	6892	0,0235	14,6	6001	0,0361	11,06	7030	0,0390	13,5
70	4043	0,0635	9,0	5774	0,0303	11,8	4579	0,0841	8,36	5691	0,0617	10,9
75	2685	0,0585	6,8	4628	0,0533	8,8	2910	0,1372	6,18	4323	0,0655	8,3
80	1329	0,1176	5,0	3213	0,1412	6,1	1245	0,1905	4,89	2694	0,1321	6,2
85	413	0,3333	3,5	1507	0,1325	4,1	393	0,2903	3,56	1299	0,2024	4,2
	1996-2000						2001-2005					
0	10.000	0,0206	63,5	10.000	0,0177	69,0	10.000	0,0133	65,9	10.000	0,0085	71,2
1	9794	0,0027	63,8	9823	0,0032	69,3	9867	0,0031	65,7	9915	0,0027	70,8
5	9630	0,0007	60,8	9684	0,0004	66,2	9729	0,0004	62,6	9835	0,0009	67,3
10	9579	0,0004	56,1	9668	0,0000	61,3	9702	0	57,8	9802	0	62,5
15	9533	0,0032	51,4	9662	0,0015	56,4	9668	0,0021	53,0	9772	0,0021	57,7
20	9318	0,0082	47,5	9603	0,0024	51,7	9529	0,0078	48,7	9695	0,0015	53,1
25	9016	0,0041	44,0	9527	0,0031	47,1	9181	0,0023	45,4	9609	0,0019	48,6
30	8807	0,0056	39,9	9435	0,0029	42,5	9041	0,0034	41,1	9521	0,0006	44,0
35	8631	0,0025	35,7	9337	0,0014	37,9	8911	0,0049	36,6	9453	0,0019	39,3
40	8464	0,0055	31,3	9229	0,0049	33,3	8753	0,0029	32,2	9360	0,0015	34,7
45	8237	0,0043	27,1	9045	0,0012	28,9	8559	0,0047	27,9	9273	0,0015	29,9
50	8033	0,0065	22,7	8843	0,0077	24,5	8277	0,007	23,7	9065	0,0085	25,5
55	7668	0,0143	18,6	8454	0,0133	20,5	7943	0,0083	19,6	8637	0,0113	21,6
60	7074	0,0335	14,8	7835	0,0164	16,8	7430	0,0205	15,6	8090	0,0131	17,9
65	6073	0,0424	11,7	6994	0,0258	13,3	6610	0,0449	12,1	7396	0,0256	14,2
70	4840	0,0832	8,7	5834	0,0537	10,3	5291	0,0508	9,3	6339	0,053	10,9
75	3079	0,1031	6,7	4259	0,0819	7,8	3612	0,1117	6,9	4806	0,0611	8,3
80	1479	0,1176	5,1	2479	0,1341	5,8	1811	0,1667	5,2	2850	0,1073	6,4
85	491	0,4	3,7	940	0,2239	4,8	588	0,2414	3,9	1343	0,16	4,8
	2006-2010						2011-2015					
0	10.000	0,0099	67,8	10.000	0,0077	72,8	10.000	0,0122	69,7	10.000	0,0061	74,1
1	9901	0,0037	67,4	9923	0,0015	72,4	9878	0,0009	69,5	9939	0,0000	73,6
5	9793	0,0023	64,2	9846	0,0000	68,9	9799	0,0010	66,1	9901	0,0000	69,9
10	9756	0,0009	59,4	9846	0,0000	63,9	9789	0,0000	61,1	9893	0,0005	64,9
15	9724	0,0024	54,6	9825	0,0034	59,0	9780	0,0009	56,2	9871	0,0000	60,0
20	9608	0,0049	50,2	9704	0,0018	54,7	9660	0,0046	51,8	9809	0,0035	55,4
25	9387	0,0025	46,3	9628	0,0011	50,1	9462	0,0050	47,8	9695	0,0005	51,0
30	9228	0,0017	42,0	9591	0,0006	45,3	9325	0,0043	43,5	9665	0,0005	46,2

35	9097	0,0026	37,6	9548	0,0013	40,5	9214	0,0028	39,0	9623	0,0026	41,3
40	8955	0,0035	33,1	9488	0,0036	35,7	9103	0,0016	34,4	9510	0,0007	36,8
45	8796	0,0035	28,6	9375	0,0040	31,1	8952	0,0029	29,9	9439	0,0017	32,0
50	8605	0,0065	24,2	9177	0,0071	26,7	8758	0,0051	25,5	9303	0,0043	27,5
55	8323	0,0104	19,9	8878	0,0107	22,5	8490	0,0106	21,2	9129	0,0082	22,9
60	7765	0,0186	16,1	8390	0,0204	18,6	8041	0,0145	17,2	8761	0,0121	18,7
65	7033	0,0300	12,4	7725	0,0274	14,9	7300	0,0287	13,5	8088	0,0329	15,0
70	5712	0,0699	9,4	6534	0,0257	12,0	6243	0,0437	10,2	7048	0,0404	11,7
75	3981	0,0894	6,9	5191	0,0665	9,1	4562	0,1095	7,7	5596	0,0941	8,8
80	2022	0,1603	5,2	3561	0,1265	6,6	2568	0,1414	5,9	3767	0,1018	6,4
85	722	0,1163	3,7	1723	0,1722	5,1	1047	0,2521	4,6	1810	0,1680	4,6

<http://bank.stat.gl/beebbd2>

Note.: Survivors refers to the lowest birthday in stub. For example, there would be 9,722 in 1986-1990 one-year-old boys of a generation of 10.000. The deathrate indicates the 10,000-share of the risk of dying between the two birthdays in the stub. Life expectancy is the average of the residual lifetimes, there will be claimed by a group, who die according to the life table.

Source: Statistics Greenland

Liveborn children by mothers age

Table 7. Liveborn children by mothers age

		1980	1985	1990	1995	2000	2005	2010	2015
		Liveborn							
Total		1.034	1.152	1.258	1.101	879	886	869	855
	15-19	203	213	123	120	150	147	74	92
	20-24	314	409	446	250	241	277	238	238
	25-29	304	288	404	365	196	193	274	247
	30-34	135	176	198	266	192	147	180	169
	35-39	57	51	76	81	89	100	73	63
	40-44	17	13	11	18	10	19	15	11
	45+	1	2	-	-	1	2	1	-
By Mothers born in Greenland		913	1.033	1.144	1.012	807	794	774	784
	15-19	201	208	118	115	148	142	73	92
	20-24	291	393	425	242	224	268	231	226
	25-29	253	229	366	328	171	157	252	231
	30-34	105	152	163	238	168	115	155	134
	35-39	45	39	64	72	85	92	63	53
	40-44	14	10	8	16	10	18	9	10
	45+	1	2	-	-	1	1	1	-
		Meanpopulation							
Total	15-19	3.063	2.831	1.684	1.694	1.912	2.243	2.262	1.953
	20-24	2.417	3.095	2.790	1.583	1.631	1.919	2.187	2.148
	25-29	2.012	2.514	3.095	2.733	1.557	1.641	1.905	2.188
	30-34	1.567	1.988	2.457	2.909	2.613	1.587	1.611	1.945
	35-39	1.512	1.497	1.833	2.205	2.728	2.497	1.462	1.503
	40-44	1.104	1.400	1.387	1.671	2.041	2.598	2.335	1.392
	45+	1.029	1.057	1.330	1.253	1.574	1.936	2.456	2.231
Women born in Greenland	15-19	2.918	2.667	1.508	1.550	1.834	2.156	2.199	1.892
	20-24	2.193	2.881	2.576	1.430	1.488	1.816	2.077	2.072
	25-29	1.614	2.170	2.770	2.467	1.344	1.390	1.702	1.951
	30-34	1.159	1.603	2.109	2.633	2.370	1.310	1.337	1.673
	35-39	1.194	1.146	1.540	1.968	2.522	2.282	1.246	1.286
	40-44	969	1.137	1.114	1.460	1.841	2.426	2.172	1.199
	45+	929	934	1.098	1.049	1.382	1.753	2.290	2.066
		Fertility							
Total	Total fertility	2.438	2.279	2.467	2.506	2.319	2.343	2.252	2.129
	15-19	66	75	73	71	78	66	52	38
	20-24	130	132	160	158	148	144	113	111
	25-29	151	115	131	134	126	118	138	125
	30-34	86	89	81	91	73	93	86	93
	35-39	38	34	41	37	33	40	49	49
	40-44	15	9	8	11	5	7	11	11
	45+	1	2	-	-	1	1	-	-
Women born in Greenland	Total fertility	2.511	2.299	2.507	2.572	2.346	2.313	2.189	2.409
	15-19	69	78	78	74	81	66	53	35
	20-24	133	136	165	169	151	148	113	118
	25-29	157	106	132	133	127	113	140	151
	30-34	91	95	77	90	71	88	78	121
	35-39	38	34	42	37	34	40	43	53
	40-44	14	9	7	11	5	7	10	4
	45+	1	2	-	-	1	1	-	-

<http://bank.stat.gl/beebblm1>

Source: Statistics Greenland

Migrations by place of birth

Table 8. Migrations by place of birth

	Immigrations			Emigrations		
	Total	Born in Greenland	Born outside Greenland	Total	Born in Greenland	Born outside Greenland
1993	2.091	466	1.625	2.618	799	1.819
1994	2.119	472	1.647	2.473	780	1.693
1995	2.236	532	1.704	2.702	898	1.804
1996	2.414	662	1.752	2.897	1.081	1.816
1997	2.579	740	1.839	2.980	1.113	1.867
1998	2.419	735	1.684	2.934	1.154	1.780
1999	2.488	803	1.685	2.804	1.093	1.711
2000	2.794	978	1.816	2.888	1.127	1.761
2001	2.461	804	1.657	2.708	1.038	1.670
2002	2.126	624	1.502	2.414	981	1.433
2003	2.388	826	1.562	2.733	1.141	1.592
2004	2.482	923	1.559	2.718	1.114	1.604
2005	2.514	870	1.644	2.962	1.252	1.710
2006	2.404	890	1.514	3.048	1.358	1.690
2007	2.417	886	1.531	2.983	1.393	1.590
2008	2.536	907	1.629	3.175	1.560	1.615
2009	2.551	1.076	1.475	2.740	1.354	1.386
2010	2.491	1.043	1.448	2.651	1.334	1.317
2011	2.283	905	1.378	2.442	1.215	1.227
2012	2.191	871	1.320	2.900	1.483	1.417
2013	2.066	967	1.099	2.513	1.307	1.206
2014	2.148	1.009	1.139	2.733	1.499	1.234
2015	2.177	1.019	1.158	2.688	1.544	1.144

<http://bank.stat.gl/beebbiu2>

Source: Statistics Greenland

Population by citizenship. Selected years 1985-2016

Table 9. Population by citizenship. Selected years 1985-2015

Citizenship	1985	1990	1995	2000	2005	2010	2015	2016
Total	52.955	55.567	55.732	56.110	56.972	56.452	55.984	55.846
Denmark	52.501	55.129	55.418	55.602	56.442	55.716	55.009	54.789
Finland	7	9	4	10	5	8	11	15
Iceland	21	26	34	115	100	94	172	204
Norway	138	116	66	84	48	61	64	62
Sweden	144	145	63	100	86	92	79	98
Estonia	-	-	-	3	3	-	-	-
Latvia	-	-	-	-	-	-	2	1
Lithuania	-	-	-	1	1	7	3	6
Belgium	-	2	1	2	3	4	3	3
Cyprus	-	1	-	1	1	-	-	-
France	10	8	9	10	11	13	11	13
Greece	-	1	-	-	-	-	-	-
Netherlands	4	2	4	5	4	8	11	13
Ireland	-	1	3	-	3	2	3	3
Italy	3	2	2	6	7	5	8	8
Luxembourg	-	-	-	-	-	-	-	-
Malta	-	-	-	-	-	-	-	-
Poland	-	4	-	3	2	24	29	36
Portugal	-	1	1	-	-	-	-	-
Slovakia	-	-	-	-	-	6	6	6
Slovenia	-	-	-	-	-	-	-	-
Croatia	-	-	-	-	-	1	1	2
Spain	3	4	3	1	-	2	6	7
Great Britain	-	34	22	20	12	22	16	18
Czech Republic	-	-	-	1	2	1	-	4
Czechoslovakia (former)	2	3	-	-	-	-	-	-
Germany	24	20	20	24	46	61	53	50
East Germany (former)	-	-	-	-	-	-	-	-
Hungary	-	1	-	-	-	-	-	-
Austria	1	-	-	1	-	3	5	3
Switzerland	4	4	2	3	8	7	2	1
Bulgaria	-	-	3	7	10	16	22	26
Romania	-	-	-	1	9	11	16	15
Turkey	1	1	-	-	-	2	1	1
Russia	-	-	-	13	18	3	5	4
Soviet Union (former)	-	-	-	-	1	1	-	-
Belarus	-	-	-	-	-	-	-	-
Ukraine	-	-	1	-	-	-	-	1
Other Europe	1	2	2	2	1	1	1	1
USA	31	22	23	19	18	29	36	41
Canada	12	4	14	8	20	13	14	13
Other America	-	3	6	9	6	13	18	15
Ethiopia	-	-	-	-	-	-	-	-
Morocco	-	-	-	-	1	1	4	3
Somalia	-	-	-	-	-	-	-	-
Other Africa	1	2	1	3	1	9	12	11
Afghanistan	-	-	-	-	-	-	-	-
Bangladesh	-	-	-	-	-	1	-	-
Philippines	-	-	6	5	10	51	157	162
India	1	1	1	4	5	1	-	-
Iraq	-	-	-	-	-	-	-	1
Iran	1	4	-	2	-	1	1	2
Japan	1	2	2	3	2	6	3	3
China	-	-	-	-	5	6	11	10

Lebanon	-	1	-	-	-	-	-	-
Pakistan	-	-	-	1	1	2	2	2
Sri Lanka	-	-	1	-	2	1	1	-
Syria	-	-	-	-	-	-	-	-
Thailand	3	6	14	37	63	131	166	175
Vietnam	-	-	-	-	-	-	-	-
Other Asia	-	3	2	3	9	12	12	10
Oceania	-	-	2	1	5	4	4	5
Stateless	-	1	-	-	-	-	-	-
Unknown	41	2	2	-	1	-	4	3

<http://bank.stat.gl/beest6>

Source: Statistics Greenland

Signatur forklaring:

- ... Oplysninger foreligger ikke
- .. Oplysninger for usikre til at angives eller diskretionshensyn
- . Tal kan efter sagens natur ikke forekomme
- 0 Mindre end halvdelen af den anvendte enhed
- Nul
- * Foreløbigt eller anslået tal

Eventuel henvendelse

Lars Pedersen

E-mail: LARP@stat.gl

2016 statistical yearbook

Grønlands Statistik
 Postboks 1025 · 3900 Nuuk
 Tlf.: +299 34 57 70 · Fax: +299 34 57 90
 www.stat.gl · e-mail: stat@stat.gl

